



Cocktails, Craft Beer, and the Colorado River

River & Beer Trivia

With featured panelists....



Rules of the Game

1

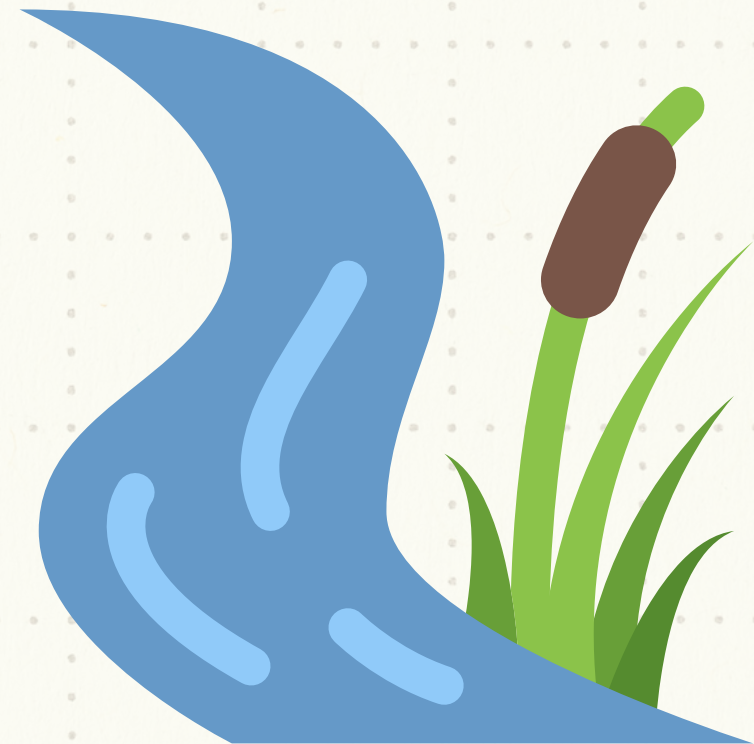
Grab a pen and paper and number it 1-25

2

We'll read off a question and provide 4 multiple choice answers. Select your answer by writing the letter (A,B,C,D) you think is correct.

3

We'll go through at the end and read out the question # along with the letter answer. Each question is worth one point. Honor system!



The background features a light blue dotted grid. A stylized map of the Colorado River basin is shown in a light blue color, with a dashed line indicating the river's path. The text "Part I: The Colorado River" is centered over the map. There are also large, solid blue abstract shapes in the corners: a large one in the top right and a smaller one in the bottom left.

Part I: The Colorado River

Question #1



For how many miles does the Colorado River run?

A. 2,375 miles

C. 1,450 miles

B. 682 miles

D. 5,678 miles

Question #2



What percentage of the Colorado River's flow comes from snowpack?

A. 45-50%

B. 70-75%

C. 85-90%

D. 10-15%

Question #3



What are the main water storage reservoirs for the Colorado River Basin?

A. Lake Powell and Lake Mead

B. Lake Glen and Lake Mead

C. Lake Wesley and Lake Powell

D. Lake Lee and Lake Hoover

Question #4



What year was the Colorado River Compact signed?

A. 2015

B. 1984

C. 1876

D. 1922

Question #5



How many significant tributaries feed the Colorado River?

A. 48

B. 25

C. 112

D. 6

Question #6



How many people rely on the Colorado River for drinking water?

A. 40 million

B. 10 million

C. 750,000

D. 1.3 billion

Question #7



How deep is the deepest point of the Colorado River?

A. 200 feet

C. 20 feet

B. 85 feet

D. 78 feet

Question #8



Where are the headwaters of the Colorado River?

A. La Poudre Pass Lake

C. Moose Pass Lake

B. Emerald Lake

D. Rocky Mountain Pond

Question #9



Who led the first official government-sponsored trip through the Grand Canyon?

A. Theodore Roosevelt

C. John Wesley Powell

B. John Doyle Lee

D. Lewis & Clarke

Question #10



Through how many states does the Colorado River flow?

A. 13

B. 22

C. 2

D. 7

Question #11



How much money does river-related recreation generate in the state of CO every year?

A. \$19 billion

C. \$500,000

B. \$20 million

D. \$1 billion

Question #12



How many species of native fish once lived in the Colorado River?

A. 49

B. 200

C. 11

D. 7

Question #13



Where does the Colorado river end (assuming water reaches all the way to its terminus)?

A. The Gulf of Mexico

C. The Salton Sea

B. The Gulf of California

D. Lee's Ferry

Part II: Craft Beer & Brewing



Question #14



How many craft breweries were operating in the U.S. in 2020?

A. 1,574

B. 922

C. 15, 887

D. 8,764

Question #15



How many craft breweries operate within the Colorado River watershed?

A. 212

B. 1,751

C. 873

D. 420

Question #16



What is the name of the project that allows Horse&Dragon and Upslope to use water from the CO River Basin in their beer?

A. The Windy Gap Project

B. The Continental Divide Diversion

C. The CO-Big Thompson Project

D. The USBR Craft Beer Grant

Question #17



How many gallons in a barrel of beer?

A. 612

B. 31

C. 11

D. 57

Question #18



How many barrels of beer can a brewery produce each year to qualify as an Independent Craft Brewer?

A. <3,000

C. <30,000

B. <2 million

D. <6 million

Question #19



Where does the word "Beer" come from?

A. From the Latin "Bibere"

B. From the Greek "Brytos"

C. From the proto-germanic "Beuwo"

D. From the Slavic "piti"

Question #20



What's the average water to beer ratio for brewers?

A. 10:1

B. 5:1

C. 7:1

D. 23:1

Question #21



Which of the following common beer off-flavors is often compared to buttered popcorn?

A. Acetaldehyde

C. DMS

B. Diacetyl

D. Oxidation

Question #22



What percentage of beer is made up of water?

A. 90-95%

B. 99-100%

C. 85-90%

D. <85%

Question #23



Upslope claims to be the first craft brewer to put which of the following in a can?

A. Lager

B. IPA

C. Amber

D. Stout

Question #24



How many cans per minute does Upslope's canning line fill?

A. 100

B. 75

C. 1,100

D. 350

Bonus Q: How many does Horse&Dragon's fill?

Question #25



How many gallons of beer do Coloradans consume each year?

A. 119mil

B. 20mil

C. 374mil

D. 7mil

Answers

Part I: Colorado River

- | | |
|------|-------|
| 1. C | 8. A |
| 2. C | 9. C |
| 3. A | 10. D |
| 4. D | 11. A |
| 5. B | 12. A |
| 6. A | 13. B |
| 7. B | |

Part II: Craft Beer & Brewing

- | | |
|-------|-------|
| 14. D | 20. C |
| 15. B | 21. B |
| 16. C | 22. A |
| 17. B | 23. B |
| 18. D | 24. D |
| 19. A | 25. A |

